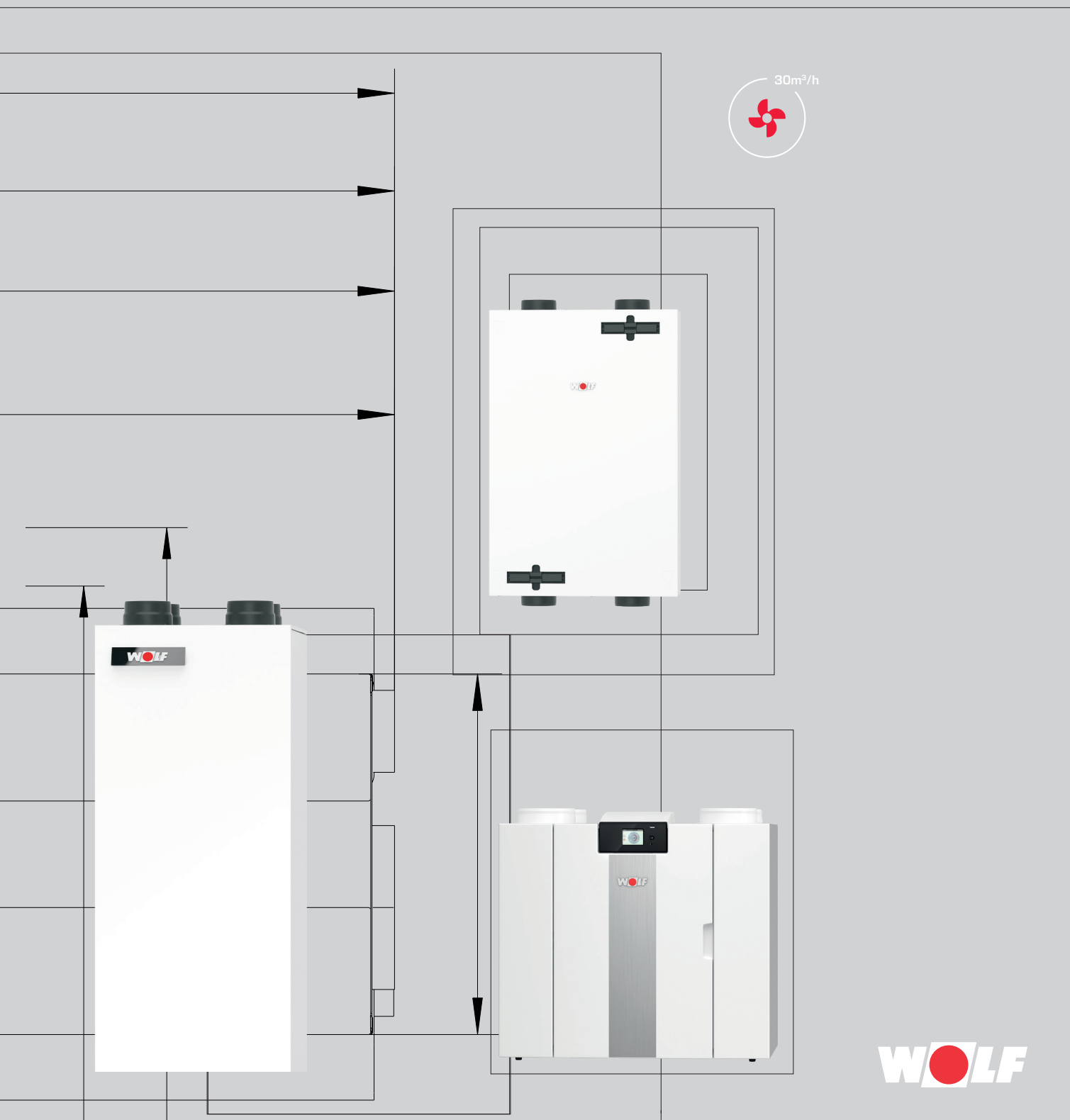
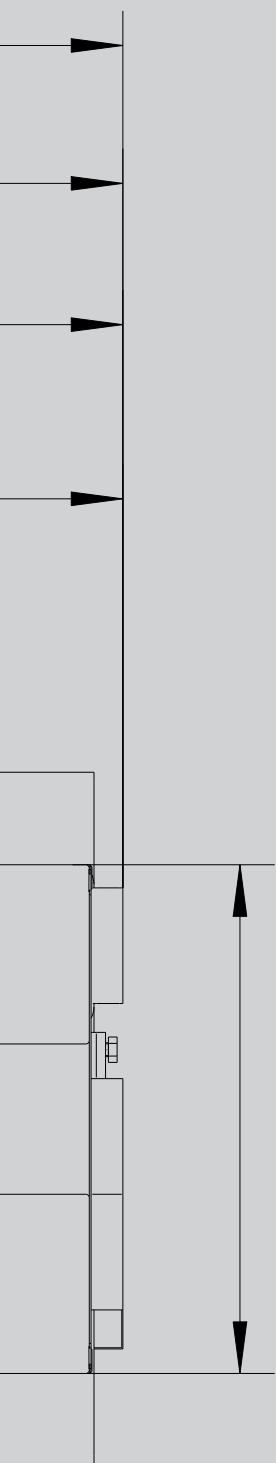


WOLF MECHANICAL VENTILATION

CWL-2 / CWL EXCELLENT / CWL-T EXCELLENT / CWL-F EXCELLENT



WOLF



THE EXTENSIVE PRODUCT RANGE

from system supplier WOLF offers the ideal solution for commercial and industrial buildings, new builds and modernisation projects alike.

The range of WOLF control units can meet any requirement for heating convenience.

All equipment is easy to operate, highly energy efficient and reliable.

Solar thermal systems can be swiftly integrated into existing systems.

WOLF equipment is easy and quick to install and maintain.

WOLF MECHANICAL VENTILATION	04-05
UNIT VERSIONS	06
SPECIFICATION	07
EXCELLENT CWL-180	07
EXCELLENT CWL-2-325/400	08
EXCELLENT CWL-300/400	09
EXCELLENT CWL-T-300	10
EXCELLENT SLIMLINE UNIT CWL-F-150/300	11
CWL-D-70	12
CONTROL CWL EXCELLENT	13
CONTROL ACCESSORIES CWL EXCELLENT	13-14
ACCESSORIES	16-29
FUNCTION CWL EXCELLENT	18
INSULATED DUCT SYSTEM CWL EXCEL- LENT / CWL	20-21
SILENCER	22
GENERAL INFORMATION FLEXIBLE DUCT SYSTEMS	23
AIR DISTRIBUTOR CWL EXCELLENT	24
FLEXIBLE HOSE SYSTEM, ROUND	26
EXCELLENT FLAT DUCT SYSTEM	27-28
SUPPLY/EXTRACT AIR VENTS	29
NOTES	30

Removable plastic cross and countercurrent plate heat exchanger

Heat recovery of up to 99%

One fan each for supply and extract air, variable speed; low energy consumption thanks to DC fans

Constant flow control with genuine flow rate control keeps the air volume constant at any selected fan speed. Consistently high efficiency is achieved and adjustments are limited to a minimum.

Automatic frost stat control offers optimum protection against freezing

Fully wired, filter change indicator on the 4-step switch, BM-2, Amazon Alexa

Clean, pollen-free fresh air - ventilation with your windows closed, cutting out street noise [not only for allergy sufferers]



BENEFITS OF WOLF MECHANICAL VENTILATION

CWL / CWL EXCELLENT

Standard connection options available for air quality sensor, humidity sensor, electrical preheating and reheating coil



Design software

- Design software based on DIN 1946-6.
- The exceptional level of user friendliness enables competent, reliable air volume calculation in next to no time.
- In addition, the software provides a complete list of materials, a matching quotation, extensive supplementary information and a full ventilation concept in accordance with DIN 1946-6.
- Download from www.wolf.eu



MECHANICAL VENTILATION

MECHANICAL VENTILATION UNIT VERSIONS



MECHANICAL VENTILATION		CWL-180 Excellent	CWL-2-325	CWL-2-400	CWL-300 Excellent	CWL-400 Excellent	CWL-T-300 Excellent	CWL-F-150 Excellent	CWL-F-300 Excellent	CWL-D-70
Max. air flow rate	m ³ /h	180	325	400	300	400	300	150	300	70
Mounting type	Wall mounting	●	●	●	●	●	○	●	●	●
	Ceiling mounting	○	○	○	○	○	○	●	●	○
	Floorstanding	●	●	●	●	●	●	○	○	○
Operating panel on the unit		●	●	●	●	●	○	○	○	●
Remote control	BM-2	●	●	●	●	●	●	●	●	○
	4-step switch	●	●	●	●	●	●	●	●	○
Bypass	integrated	○	●	●	●	●	●	●	●	●
Elect. preheater coil	integrated	○	●	●	●	●	●	●	○	●
	Accessories	●	○	○	○	○	○	○	●	○
Hydr. reheater coil	Accessories	○	○	○	○	○	●	○	○	○
Elect. reheater coil	Accessories	●	●	●	●	●	●	●	●	○
Enthalpy heat exchanger Accessories		○	●	●	●	●	○	○	●	○
Air quality, moisture and CO ₂ sensor	Accessories	●	●	●	●	●	●	●	●	●
Passive house certificate		○	applied for	applied for	●	●	●	●	●	○
DIBt approval		○	applied for	applied for	●	●	●	●	●	applied for

GENERAL INFORMATION

Units with air handling rates of 50 - 400 m³/h.

Suitable for detached houses and apartment buildings as well as offices and apartments.

The CWL Excellent mechanical ventilation system with heat recovery extracts stale air from the kitchen, bathroom and toilet areas. This air is routed across a cross and countercurrent plate heat exchanger and is expelled to the outside.

At the same time, fresh outdoor air is drawn into the system, cleaned by an air filter, heated by the cross and countercurrent heat exchanger and routed into rooms such as the living room, bedrooms and children's rooms.

MECHANICAL VENTILATION

CWL-180 EXCELLENT

SPECIFICATIONS

CONNECTION OPTIONS

To cope with varied installation situations, WOLF offers the unit with 2 different connection options:

- Right-hand version 4/O
- Left-hand version 4/O

The access door for filter servicing opens either to the left or to the right.

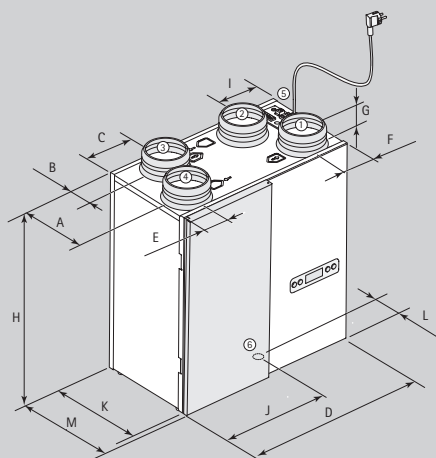
The position of the connections for supply air, exhaust air, extract air and outdoor air is as illustrated below.



CWL EXCELLENT		180
Energy efficiency class		B¹⁾
Air flow rate at 150 Pa	m³/h	180
Heat recovery max.	%	92
ErP heat recovery	%	82
ErP specific power consumption [SPI]	W/m³/h	0.31
Dimensions		
Duct connection diameter	mm	125
Height	mm	600
Width	mm	560
Depth	mm	315
Filter		ISO coarse 60% [G4]
Power factor	Cosφ	0.44 - 0.52
Power consumption	W	16 - 132
Power consumption (without preheating coil)	W	64 [at 150 m³/h and 100 Pa]
Weight	kg	25
IP rating	IP	30
Electrical connection		230 V / 50 Hz

¹⁾ A with at least two sensors

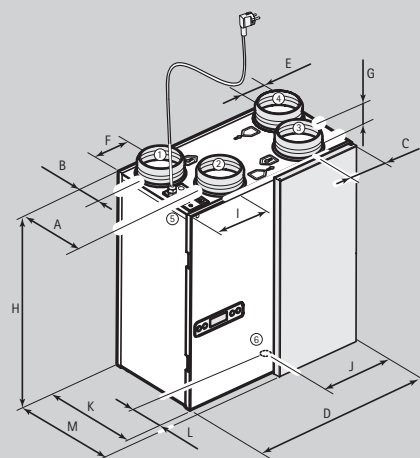
Connection 4/O L



1 Supply air [living room]
2 Exhaust air [to the outside]

3 Extract air [living room]
4 Outdoor air [from the outside]

Connection 4/O R



5 Electrical connection
6 Drain connection

Type	A	B	C	D	E	F	G	H	I	J	K	L	M
CWL-180 Excellent R/L	213	77	125	560	75	79	45	600	168	248	290	145	315



MECHANICAL VENTILATION

MECHANICAL VENTILATION

CWL-2-325/400 EXCELLENT

SPECIFICATIONS

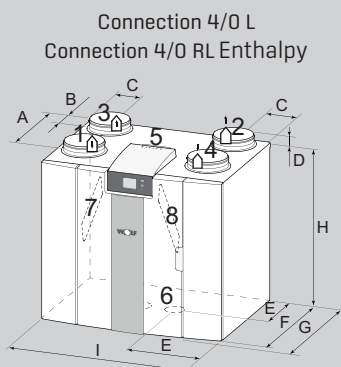
- Bypass as standard
- Electric integrated preheating coil 1000 W as standard
- incl. Ball trap
- Also available with Enthalpy heat exchanger for moisture recovery



CWL-2 EXCELLENT		325	400
Energy efficiency class ¹⁾		A	A
Air flow rate at 150 Pa	m³/h	325	400
Heat recovery max.	%	98	99
ErP heat recovery	%	91	92
PHI heat recovery ²⁾	%	91	90
ErP specific power consumption [SPI]	W/m³/h	0,15	0,16
PHI specific power consumption [SPI] ²⁾	W/m³/h	0,21	0,22
Dimensions			
Duct connection diameter	mm	160	180
Height	mm	650	650
Width	mm	750	750
Depth	mm	560	560
Filter		ISO coarse 60% [G4] [ePM1 50% [F7] as accessory]	ISO coarse 60% [G4] [ePM1 50% [F7] as accessory]
Power factor	Cos φ	0,34 - 0,54	0,27 - 0,56
Power consumption	W	6 - 145	8 - 178
Power consumption (without preheating coil)	W	42,2 [at 225 m³/h and 100 Pa]	87 [at 300 m³/h and 140 Pa]
Weight	kg	37	38,5
IP rating	IP	30	30
Electrical connection		230 V / 50 Hz	230 V / 50 Hz

¹⁾ A* with at least two sensors

²⁾ PHI = Passivhaus Institute

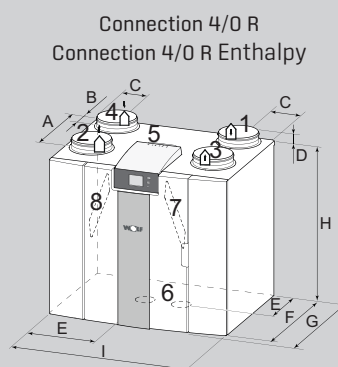


1 Supply air [living room]
2 Exhaust air [to the outside]

3 Extract air [living room]
4 Outdoor air [from the outside]

5 Electrical connection
6 Drain connection

7 Exhaust air filter
8 Outdoor air filter



Type	A	B	C	D	E	F	G	H	I
CWL-2-325	410	130	120	45	270	510	560	650	750
CWL-2-400	410	130	120	45	270	510	560	650	750

MECHANICAL VENTILATION CWL-300/400 EXCELLENT SPECIFICATIONS

- Bypass as standard
- Electric integrated preheating coil 1000 W as standard

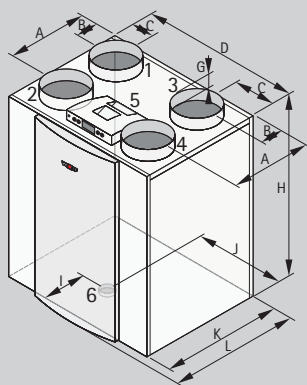


CWL EXCELLENT		300	400
Energy efficiency class ¹⁾		A	A
Air flow rate at 150 Pa	m³/h	300	400
Heat recovery max.	%	89	93
ErP heat recovery	%	86	85
PHI heat recovery ²⁾	%	84	84
ErP specific power consumption [SPI]	W/m³/h	0.21	0.24
PHI specific power consumption [SPI] ²⁾	W/m³/h	0.26	0.29
Dimensions			
Duct connection diameter	mm	160	180
Height	mm	765	765
Width	mm	677	677
Depth	mm	564	564
Filter		ISO coarse 60% [G4] [ePM1 50% [F7] as accessory]	ISO coarse 60% [G4] [ePM1 50% [F7] as accessory]
Power factor	Cos φ	0.37 - 0.50	0.38 - 0.61
Power consumption	W	3 - 138	3 - 172
Power consumption (without preheating coil)	W	58 W [at 225 m³/h and 100 Pa]	84 W [at 300 m³/h and 100 Pa]
Weight	kg	38	38
IP rating	IP	30	30
Electrical connection		230 V / 50 Hz	230 V / 50 Hz

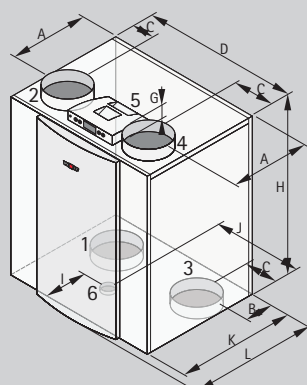
¹⁾ A* with at least two sensors

²⁾ PHI = Passivhaus Institute

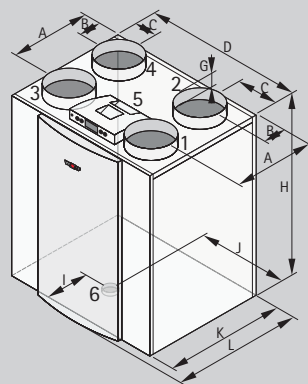
Connection 4/0 R



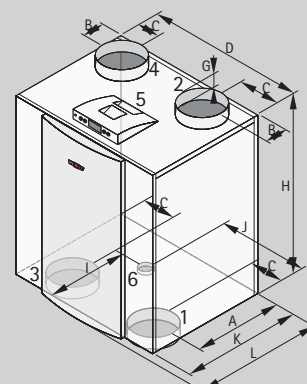
Connection 2/2 R



Connection 4/0 L



Connection 2/2 L



1 Supply air (living room)
2 Exhaust air (to the outside)

3 Extract air (living room)
4 Outdoor air (from the outside)

5 Electrical connection
6 Drain connection

Type	A	B	C	D	G	H	I	J	K	L
CWL-300/400 Excellent R	388	138	138	677	45	765	198	397	526	564
CWL-300/400 Excellent L	388	138	138	677	45	765	328	280	526	564

MECHANICAL VENTILATION

CWL-T-300 EXCELLENT

SPECIFICATIONS

CWL-T EXCELLENT		300
Energy efficiency class ¹⁾		A
Air flow rate at 150 Pa	m³/h	300
Heat recovery max.	%	93
ErP heat recovery	%	85
PHI heat recovery ²⁾	%	84
ErP specific power consumption [SPI]	W/m³/h	0.22
PHI specific power consumption [SPI] ²⁾	W/m³/h	0.28
Dimensions		
Duct connection diameter	mm	160
Height	mm	1287.5
Width	mm	475
Depth	mm	585
Filter		ISO coarse 60% [G4] [ePM1 50% [F7] as accessory]
Power factor	Cos φ	0.32 - 0.43
Power consumption	W	10 - 164
Power consumption (without preheating coil)	W	86 [at 225 m³/h and 100 Pa]
Weight	kg	50
IP rating	IP	20
Electrical connection		230 V / 50 Hz

¹⁾ A* with at least two sensors

²⁾ PHI = Passivhaus Institute

Installation options

to the right or the left of
the heat generator



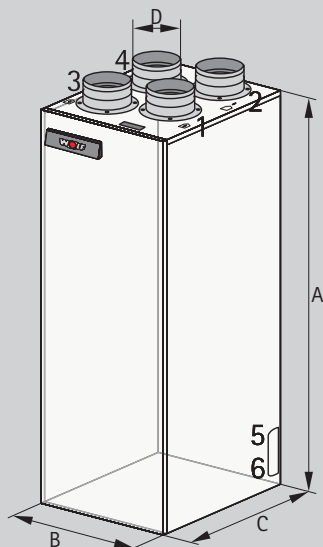
In conjunction with
the TOB oil condensing
boiler



In conjunction with CGS-2
gas condensing centre

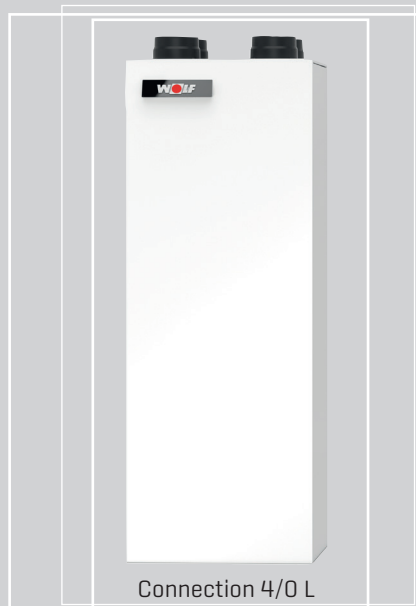


In conjunction with the
BWL-1S split heat pump

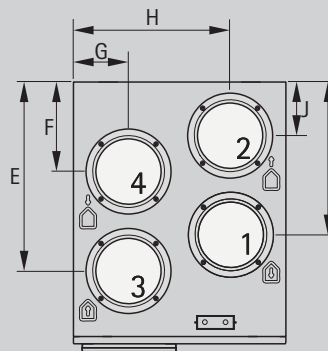


Connection 4/0 L

- 1 Supply air (living room)
- 2 Exhaust air (to the outside)
- 3 Extract air (living room)
- 4 Outdoor air (from the outside)
- 5 Electrical connection
- 6 Drain connection



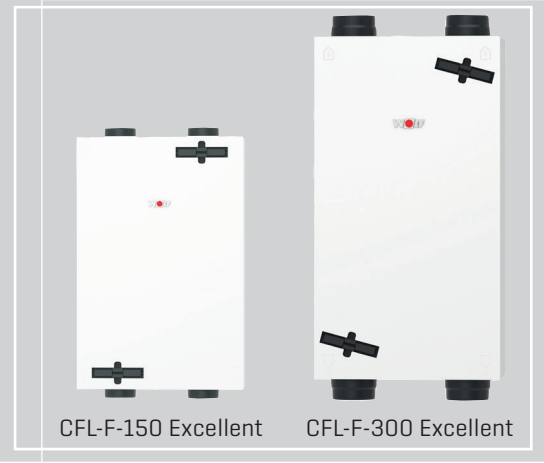
- Removable plastic cross and countercurrent plate heat exchanger
- Bypass as standard
- Electric 1000 W preheating coil integrated in the appliance
- Filter ISO coarse 60% [G4], ePM1 50% [F7] as optional accessory
- Trap included
- Control via BM-2 programming unit
- The automatic frost stat control offers optimum protection against freezing
- Fully wired unit with filter change indicator on the programming unit or the 4-step switch
- Passive house certificate
- DIBt approval



Type	A	B	C	D	E	F	G	H	I	J
CWL-T-300 Excellent	1287.5	475	585	160	424	201	123	352	343	121

MECHANICAL VENTILATION SLIMLINE UNIT CWL-F-150/300 EXCELLENT SPECIFICATIONS

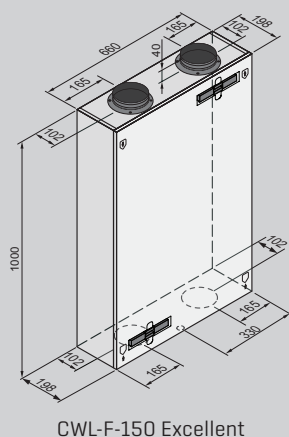
- Compact, slimline design for ceiling and wall mounting
- Bypass as standard
- Filter ISO coarse 60% [G4], ePM1 50% [F7] as optional accessory
- Standard on the CWL-F-150 Excellent: electrical integrated preheating coil 375W



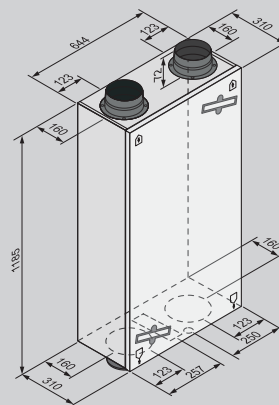
CWL-F EXCELLENT		150	300
Energy efficiency class ¹⁾		A	A
Air flow rate at 150 Pa	m ³ /h	150	300
Heat recovery max.	%	94	92
ErP heat recovery	%	89	84
PHI heat recovery ²⁾	%	84	85
ErP specific power consumption [SPI]	W/m ³ /h	0.27	0.24
PHI specific power consumption [SPI] ²⁾	W/m ³ /h	0.35	0.31
Dimensions			
Duct connection diameter	mm	125	160
Height	mm	1000	1185
Width	mm	660	644
Depth	mm	198	310
Filter		ISO coarse 60% [G4] [ePM1 50% [F7] as accessory]	ISO coarse 60% [G4] [ePM1 50% [F7] as accessory]
Power factor	Cos φ	0.34 - 0.49	0.39 - 0.53
Power consumption	W	11 - 72	9 - 162
Power consumption (without preheating coil)	W	52 [at 125 m ³ /h and 100 Pa]	79 [at 225 m ³ /h and 100 Pa]
Weight	kg	25	37
IP rating	IP	30	30
Electrical connection		230V / 50Hz	230V / 50Hz

¹⁾ A* with at least two sensors

²⁾ PHI = Passivhaus Institute



CWL-F-150 Excellent



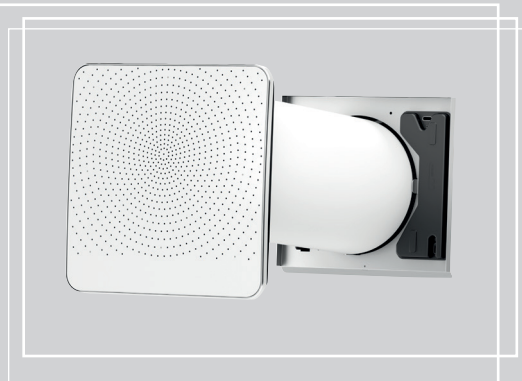
CWL-F-300 Excellent

MECHANICAL VENTILATION

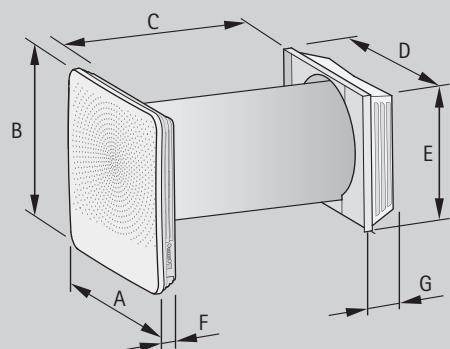
CWL-D-70

SPECIFICATIONS

- White internal panel
- External wall hood in white (RAL 9010) or stainless steel
- Clean, pollen-free fresh air - ventilation with your windows closed, cutting out street noise (not only for allergy sufferers)
- Removable plastic countercurrent plate heat exchanger
- Heat recovery min. 87%
- Bypass as standard
- Automatic frost stat control
- Low energy consumption thanks to DC fans
- Electric 175 W preheating coil integrated in the appliance
- ISO coarse 60% [G4] filter
ePM1 50% [F7] as optional accessory for supply air
Filter change indicator on the unit
- Unit fully wired
- DIBt approval applied for



CWL-D		70
Energy efficiency class		A
Air flow rate	m³/h	70
Air handling rate at fan stage 1 / 2 / 3 / 4 / 5		15 / 25 / 40 / 55 / 70
Heat recovery max.	%	87
ErP heat recovery	%	79
ErP specific power consumption [SPI]	W/m³/h	0.2
Dimensions		
Unit diameter	mm	250
Core hole bore	mm	Ø 260 (with 3° slope towards the outside)
for wall thickness incl. accessories	mm	500 - 600
for wall thickness not incl. accessories	mm	300 - 500
Filter		2x ISO coarse 60% [G4] (extract air) & 1x ISO coarse 60% [G4] (supply air) [ePM1 50% [F7] as accessory]
Weight	kg	14
IP rating	IP	Indoor unit IP 20 / front cover IP X4
Electrical connection		230 V / 50 Hz



ACCESSORIES

- Extension in white (RAL 9010) or stainless steel
 - Length: 200 mm For wall thicknesses 350 - 300 mm
 - Length: 150 mm For wall thicknesses 400 - 350 mm
 - Length: 100 mm For wall thicknesses 450 - 400 mm
 - Length: 50 mm For wall thicknesses 500 - 450 mm
- Additional PCB (for connecting sensors)
- Internal CO₂ sensor and humidity sensor
- ON/OFF switch optional
- ISO coarse 60% [G4] and ePM1 50% [F7] filter sets

Type	A	B	C	D	E	F	G
CWL-D-70	398	398	500 - 600	355	315	65	85

CONTROL UNIT

Operating panel



MICROPROCESSOR CONTROL UNIT

WITH DISPLAY FOR ADJUSTING AND DISPLAYING THE INDIVIDUAL CONTROL FUNCTIONS

- Set value adjustment of the supply and extract air flow rate
- Fans ON / OFF
- Programmable pressure compensation or pressure balancing - i.e. if required, overpressure or underpressure can generally be deliberately created inside the accommodation via an adjustable value
- Filter alarm on the display (filter service)
- Frost protection
- Displaying the selected values

BM-2 PROGRAMMING UNIT

- Fixed time programs can be selected
- 3.5" colour display
- Simple user prompts via plain text display
- Operated by rotary selector with pushbutton function
- 4 function keys for frequently used functions
- microSD card slot for software update
- Installation as a remote control in wall mounting base

CONTROL ACCESSORIES

THE FOLLOWING ACCESSORIES CAN BE CONNECTED DIRECTLY TO THE UNIT:

- **HUMIDITY SENSOR** - ensures that a greater amount of air is extracted automatically when there is excessive humidity [e.g. in the bathroom] [ventilation]
- **AIR QUALITY SENSOR** - ensures that a greater amount of fresh air is fed in automatically when the air quality worsens [e.g. in the living room] [ventilation]
- **CO₂ SENSOR** - ensures that a greater amount of fresh air is fed in automatically when the CO₂ content is excessive
- **CONTROL OF A REHEATING COIL** [1000 W] - the reheating coil heats the supply air to an adjustable value



AIR QUALITY SENSOR

Mixed gas sensor to measure the air quality;
output signal 0-10V, power supply 24V;
Extension kit for additional functions required for CWL-180 Excellent and CWL-F-300 Excellent

HUMIDITY SENSOR

For measuring relative humidity;
output signal 0-10V, power supply 24V;
Extension kit for additional functions required for CWL-180 Excellent and CWL-F-300 Excellent

CO₂ SENSOR

Required for CO₂-dependent operation
Fully wired, as control variable for the CO₂-dependent control
Output signal 0-10 V, power supply 24 V
Extension kit for additional functions required for CWL-180 Excellent and CWL-F-300 Excellent

MECHANICAL VENTILATION CWL EXCELLENT CONTROL ACCESSORIES



EBUS CO₂ SENSOR FLUSH MOUNTED

for measuring the CO₂ content,
output signal 0-10 V, power supply 24 V

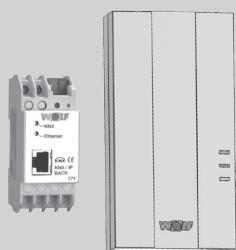


ISM7E / WOLF LINK PRO – EXTERNAL INTERFACE MODULE

Consisting of:

Interface module ISM7e / WOLF LINK PRO, installation and operating instructions, eBus cable, power supply unit, network cable

- LAN and WLAN interface module for wall mounting or mobile use
- Connection of WOLF heating appliances to the WOLF Smartset portal / app
- Mobile application for setting heating system parameters
- Power supply via power supply unit or USB



KNX - EXTERNAL INTERFACE KIT

Consisting of:

ISM8e interface module, KNX-IP-BAOS module, installation/operating instructions, network cable

- For integrating WOLF ventilation units into a KNX network

Note: Only used in conjunction with BM-2



MOD-BUS - EXTERNAL INTERFACE KIT

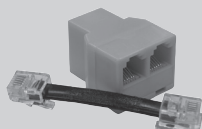
Interface kit for integrating WOLF ventilation units into a Modbus network



EXTENSION KIT FOR ADDITIONAL FUNCTIONS

With connection options for air quality sensor, humidity sensor and reheating coil

Available for CWL-180 Excellent
CWL-F-300 Excellent



MODULAR DISTRIBUTOR RJ12

Consisting of:

Cable and splitter



RH DUCT SENSOR

For measuring relative humidity;



CWL SERVICE TOOL

For easier programming

Free software can be found on our homepage



4-STEP SWITCH WITH FILTER CHANGE INDICATOR

- Position 1: Ventilation for moisture protection e.g. during absence (holiday)
- Position 2: Reduced ventilation
- Position 3: Nominal ventilation rate, corresponds to standard operation when the occupants are present
- Position 4: Intensive ventilation, e.g. during a party, when there are visitors (high oxygen consumption)



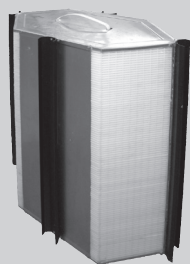
4-STAGE REMOTE CONTROL

with filter change indicator
consisting of receiver and transmitter

MECHANICAL VENTILATION CWL EXCELLENT ACCESSORIES



ELECTRICAL PREHEATING COIL OR REHEATING COIL 1000 W



**ENTHALPY HEAT EXCHANGER
FOR MOISTURE RECOVERY**

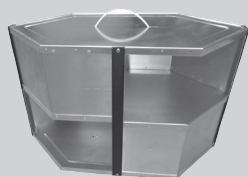
Hygiene: AATCC certificate [VDI 6022]
Heat recovery according to EN 308: 78%
Moisture recovery 59%

Available for CWL-300/400 Excellent
CWL-F-300 Excellent



**CONDENSATE REMOVAL PUMP WITH POTENTIAL-FREE ALARM OUTPUT,
FULLY WIRED**

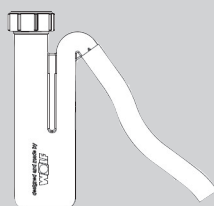
Consisting of:
Condensate pump with potential-free alarm output, PVC hose 10 mm (6 m long),
non-return valve, condensate inlet adaptor



SUMMER CASSETTE

Alternative to in-line heat exchangers
without heat recovery

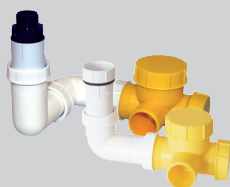
Available for CWL-180-Excellent



TRAP

Effective height 90 mm

Available for CWL-300/400 Excellent



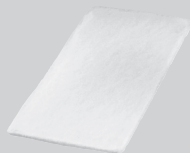
BALL TRAP



REPAIR STAND

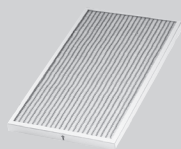
Alternatively with front panel

Available for CWL-2 Excellent



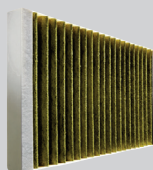
FILTER SERVICE SET ISO COARSE 60% (G4)

Outdoor air or extract air filter, 2 x ISO coarse 60% [G4]



FILTER SERVICE SET EPM1 50% (F7)

Outdoor air filter, 2 x ePM1 50% [F7]

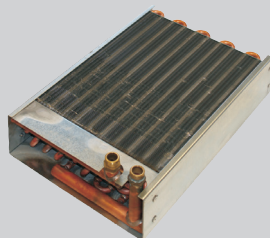


COMBI SERVICE SET, ACTIVATED CHARCOAL FILTER

Outdoor air filter, antiallergenic 2 x ePM2.5 50% [M6]

Available for CWL-300/400 Excellent

CWL-T EXCELLENT



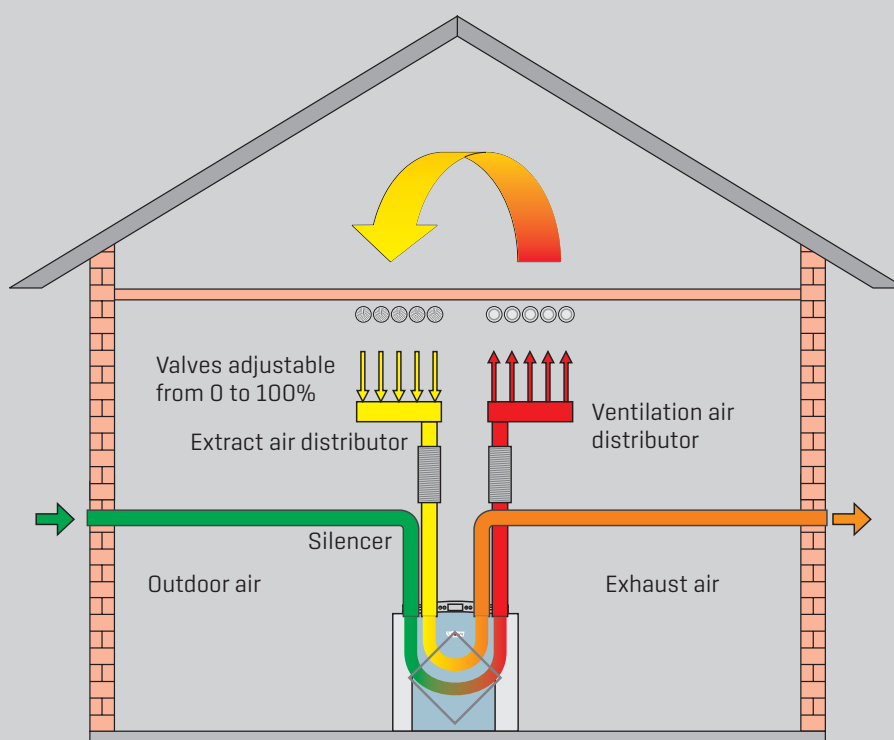
HYDRAULIC REHEATING COIL 3000 W

Incl. flow valve with thermostatic head and remote sensor for installation in the supply air insulated duct in addition to automatic vent and corrugated stainless steel pipes

MECHANICAL VENTILATION

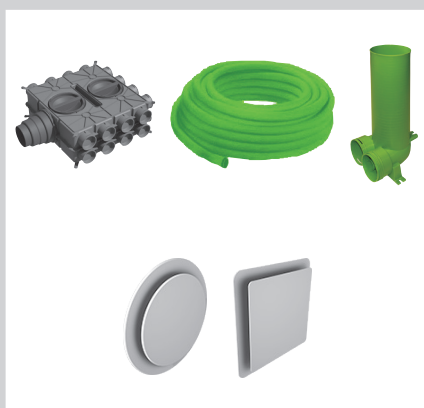
CWL EXCELLENT

FUNCTION



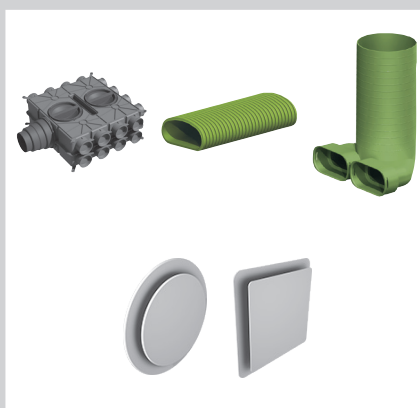
AIR GUIDANCE

Air routing from the distributor to the valves using a round hose system 75/63 or 63/52



AIR GUIDANCE

Air routing from the distributor to the vents using flat duct system Excellent 50x100 or Excellent 50x140



AIR GUIDANCE

Air routing for outdoor air and exhaust air to the supply air and extract air distributor via insulated ducts DN 125/160/180.

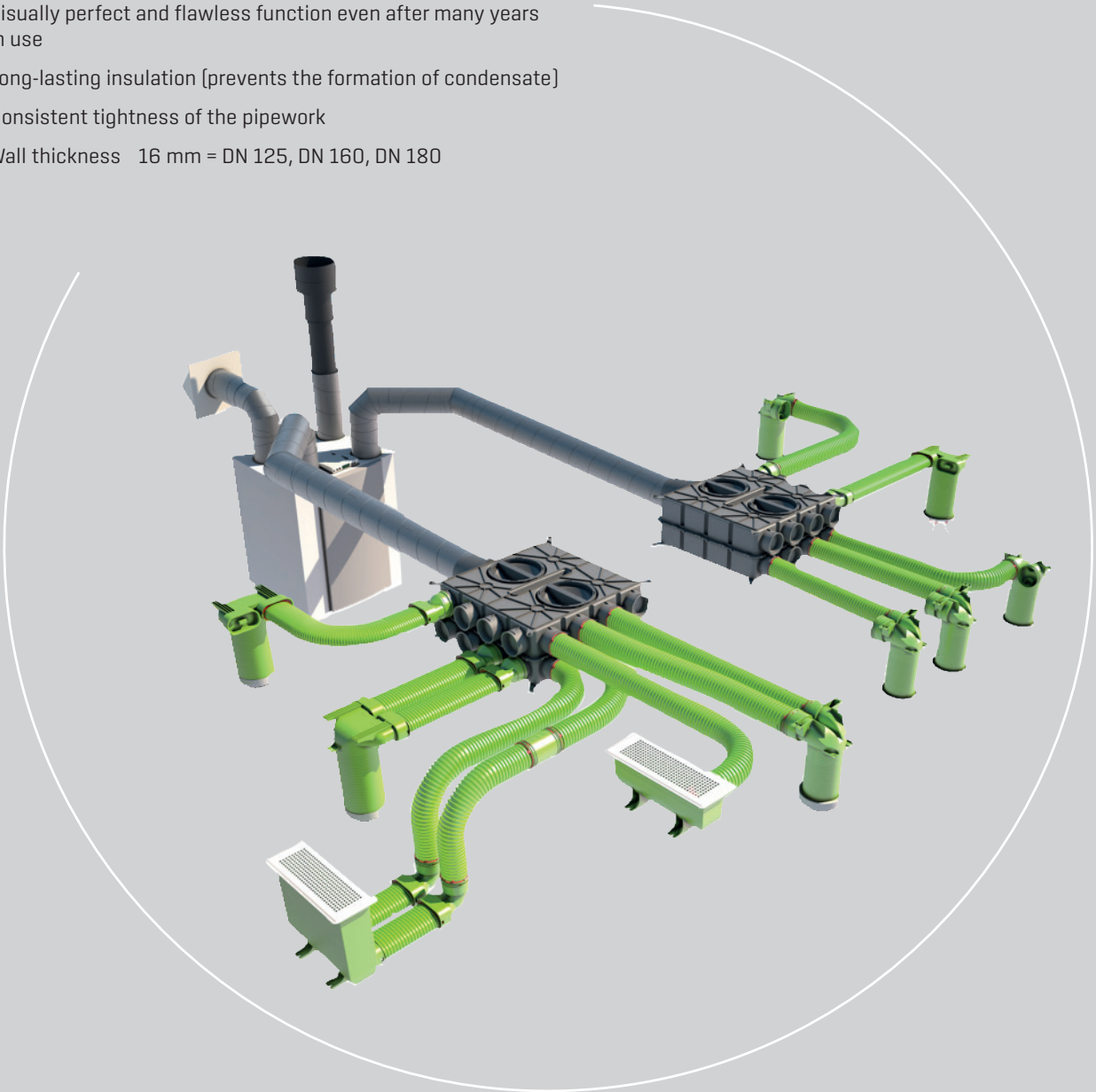


TECHNICAL PROPERTIES OF INSULATED DUCT

- Material density 50 kg/m³, anti-static
- Heat transfer coefficient 0.041 W/(m²K)
- Temperature range -40 °C to +60 °C
- Fire safety class B1 to DIN 4102-1 tested by the MPA Dortmund Institut
- Insulated roof outlet
- A special knife is offered for installation purposes
- Complies with DIN 1946-6

Insulated duct CWL replaces the traditional folded spiral-seam tube with insulation by a ready insulated round pipeline DN 125, DN 160 and DN 180 made from vapour-proof EPE foam with reduced system costs. Perfectly matching pipe elements combined with insulated roof outlets for superior system benefits:

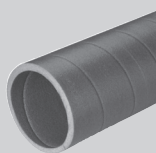
- Quick installation [savings in labour costs up to 70% compared with folded spiral-seam tube]
- Easy cleaning thanks to optimally smooth internal surface without edge
- Connection of profiles by means of twist-proof locking ring
- Good sound insulation thanks to the relatively soft material
- Visually perfect and flawless function even after many years in use
- Long-lasting insulation [prevents the formation of condensate]
- Consistent tightness of the pipework
- Wall thickness 16 mm = DN 125, DN 160, DN 180



MECHANICAL VENTILATION

CWL EXCELLENT / CWL

ISO PIPE SYSTEM



INSULATED DUCT CWL

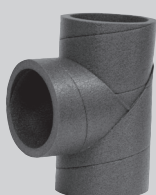
Length 2000 mm

DN 125
DN 160
DN 180



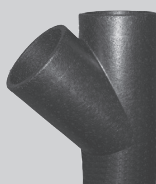
INSULATED DUCT CWL BENDS 90° AND 45°

DN 125
DN 160
DN 180



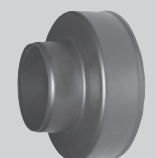
INSULATED DUCT CWL T-PIECE

DN 125
DN 160



INSULATED DUCT CWL Y-PIECE 45°

DN 180



INSULATED DUCT CWL REDUCER

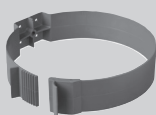
DN 160/125
DN 180/125
DN 180/160



LOCKING RING

For joining pipes and profiles with anti-twist protection.

DN 125
DN 160
DN 180



FIXING BRACKET FOR INSULATED DUCT

DN 125
DN 160
DN 180



SPECIAL KNIFE

For trimming pipes to size.
The special teeth facilitate a quick and clean cut.

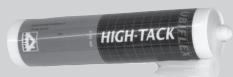


CWL ROOF OUTLET WITH THERMAL INSULATION

Length 1159 mm

Colour black or red DN 125 and DN 160

Colour black DN 180



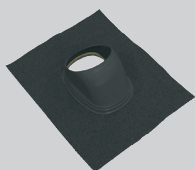
UBBIFLEX HIGH TACK – GLUE

For fixing the CWL universal roof tile on tiles or roof



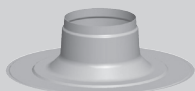
SEALING COLLAR

For CWL roof outlet



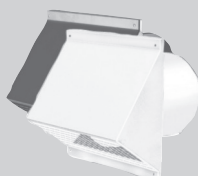
CWL UNIVERSAL ROOF TILE 25° TO 45°

Colour black or red DN 125 - DN 180



CWL FLAT ROOF OUTLET 0°

DN 125 - DN 180



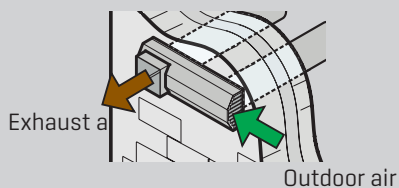
CWL WALL MOUNTED HOOD WITH GRILLE

Colour black or white

DN 125

DN 160

DN 180



DOUBLE GRILLE

For outdoor air and exhaust air

Colour white or stainless steel

DN 125 for CWL-F-150 Excellent and CWL-180 Excellent

DN 160 for CWL-F-300 Excellent and CWL-300 Excellent

MECHANICAL VENTILATION

CWL EXCELLENT / CWL

SILENCER



SILENCER

For supply air or extract air
Length 500 mm or 1000 mm

DN125, 50 mm thermal insulation
DN160, 50 mm thermal insulation
DN180, 50 mm thermal insulation



SILENCER, FLEXIBLE

For supply air or extract air
Length 1000 mm

DN125, 50 mm thermal insulation
DN160, 50 mm thermal insulation
DN180, 50 mm thermal insulation

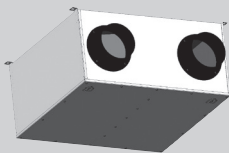


SILENCER

Metal, for supply air and extract air
Length 482 mm

DN125

Available for CWL-F-150 Excellent

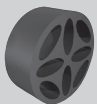


SILENCER

Metal, for supply air and extract air
Length 600 mm

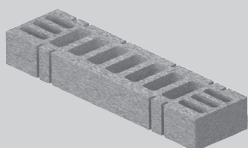
DN160

Available for CWL-F-300 Excellent



SILENCER AND FLOW RATE CONTROLLER

For DN 125 connector



SILENCER AND FLOW RATE CONTROLLER

For floor grille connector

FLEXIBLE ROUND DUCT SYSTEM

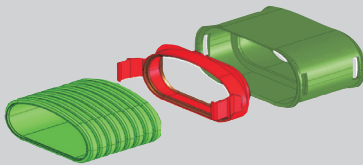


Pipe systems specially designed for ventilation equipment, for flexible routing across ceilings, in false ceilings and in walls.

Twin layer construction (smooth interior, corrugated exterior) ensures:

Good acoustic insulation thanks to low flow resistance; high rigidity but still extremely flexible, low weight. The Excellent flat duct system is also (optionally) odourless and antibacterial thanks to an environmentally-friendly material (PE) and hygienically safe new material. Both the flexible round hose system and the Excellent flat duct system can also feature minimal dust deposits thanks to (optional) antistatic internal skin. Hygienic surface thanks to an easy-to-clean special internal skin. Tested without measurable contaminant concentration in the air. Shorter installation times thanks to easy working without special tools; no waste thanks to endless routing via click joints; direct routing on unfinished concrete, screed or in false ceilings; watertight and airtight to EN 1610 thanks to the use of seal rings at joints. Two diameters are available for the flexible round hose system (A:75/l:63 mm or A:63/l:52 mm). The Excellent flat duct system is available in the sizes 50 x 100 mm and 50 x 140 mm.

FLEXIBLE FLAT DUCT SYSTEM



SIZING

An optimum operation can be achieved when the flow rate inside the pipe is limited to approx. 3.0 m/s (low resistance).

The supply and extract air vents can be preset when the maximum pipe length (15 m in a detached house) and the pressure drop details are known. This reduces the adjustment time considerably.

The flow rate is as follows, relative to the recommendation of approx. 3.0 m/s:

Flexible hose system, round:

Single hose DN 63 approx. $\pm 20 \text{ m}^3/\text{h}$

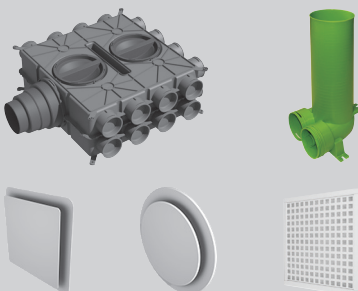
Single hose DN 75 approx. $\pm 30 \text{ m}^3/\text{h}$

Excellent flat duct system:

Single duct routing 50 x 100 mm up to $30 \text{ m}^3/\text{h}$

Single duct routing 50 x 140 mm up to $55 \text{ m}^3/\text{h}$

ROUTING INFORMATION



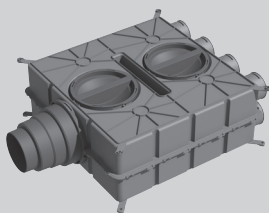
Various air distributors are available for supply and extract air distribution in the building. Supply and extract air vents are integrated into the hose system via the connectors.

The supply and extract air lines, air distributors and connectors for the supply and extract air vents are mainly routed and installed on the unfinished floor. These components may also be routed and installed in intermediate ceilings. The supply and extract air vents can be installed in the ceiling and in the wall.

MECHANICAL VENTILATION

CWL EXCELLENT

AIR DISTRIBUTOR



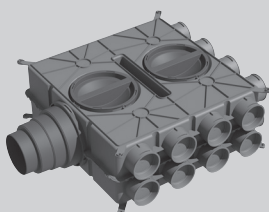
AIR DISTRIBUTOR DN 125-180

Plastic, for supply air or extract air, antistatic and antibacterial

8 connectors DN 75 with 4 pipe caps

An adaptor is required to attach flexible pipe or flat duct connections DN 63, 50x100 and 50x140 to the air distributor. For 50x140, max. 6 connections possible.

Note: Click and seal ring DN 75 required!



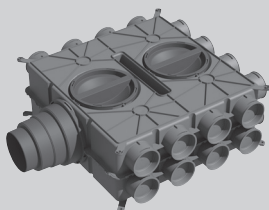
AIR DISTRIBUTOR DN125-180

Plastic, for supply air or extract air, antistatic and antibacterial

16 connectors DN 75 with 8 pipe caps

An adaptor is required to attach flexible pipe or flat duct connections DN 63, 50x100 and 50x140 to the air distributor. For 50x140, max. 12 connections possible.

Note: Click and seal ring DN 75 required!



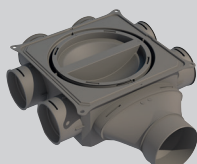
AIR DISTRIBUTOR DN125-180

Plastic, for supply air or extract air, antistatic and antibacterial

24 connectors DN 75 with 12 pipe caps

An adaptor is required to attach flexible pipe or flat duct connections DN 63, 50x100 and 50x140 to the air distributor. For 50x140, max. 18 connections possible.

Note: Click and seal ring DN 75 required!

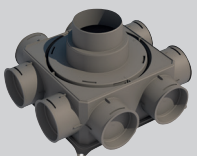


MINI AIR DISTRIBUTOR 6-75

Plastic, for supply air or extract air, antistatic and antibacterial

An adaptor is required to attach flexible pipe or flat duct connections DN 63, 50x100 and 50x140 to the air distributor.

Note: Click and seal ring DN 75 required!

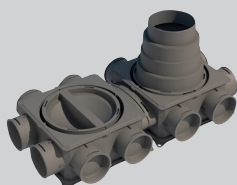


MINI AIR DISTRIBUTOR 8-75

Plastic, for supply air or extract air, antistatic and antibacterial

An adaptor is required to attach flexible pipe or flat duct connections DN 63, 50x100 and 50x140 to the air distributor.

Note: Click and seal ring DN 75 required!



MINI AIR DISTRIBUTOR 12-75

Plastic, for supply air or extract air, antistatic and antibacterial

An adaptor is required to attach flexible pipe or flat duct connections DN 63, 50x100 and 50x140 to the air distributor.

Note: Click and seal ring DN 75 required!

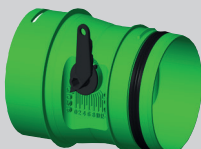


MINI AIR DISTRIBUTOR 16-75

Plastic, for supply air or extract air,
 antistatic and antibacterial

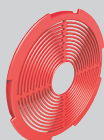
An adaptor is required to attach flexible pipe or flat duct connections
 DN63, 50x100 and 50x140 to the air distributor.

Note: Click and seal ring DN 75 required!



VOLUMETRIC FLOW CONTROLLER V-EASY

For adjusting the volume flows on the air distributor



RESTRICTOR DN 75

For air distributor DN125-180,
 plastic, antistatic and antibacterial
 10 pce



BEND 90°

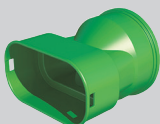
DN 63
 DN 75



ADAPTOR DN63

For connecting to the air distributor DN 125-180,
 plastic, antistatic and antibacterial

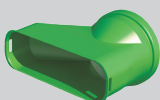
Note: Click and seal ring DN 63 required!



ADAPTOR FOR FLAT DUCT 50X100

For connection to the air distributor DN125-180,
 plastic, antistatic and antibacterial

Note: Seal ring 50x100 required!

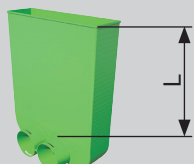
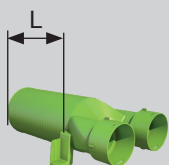
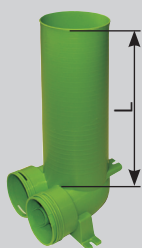
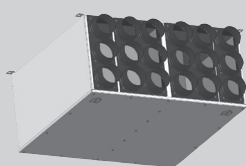
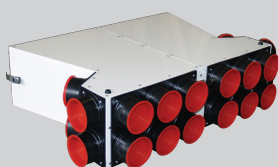
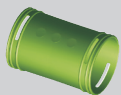


ADAPTOR FOR FLAT DUCT 50X140

For connection to the air distributor DN125-180,
 plastic, antistatic and antibacterial

Note: Seal ring 50x140 required!

MECHANICAL VENTILATION CWL EXCELLENT FLEXIBLE HOSE SYSTEM, ROUND



AIR DISTRIBUTION HOSE

With smooth internal surface, antistatic and antibacterial DN 63/52, 50 m roll
DN 75/63, 50 m roll

With smooth internal surface DN 63/52, 50 m roll
DN 75/63, 50 m roll

CLICK CONNECTOR FOR AIR DISTRIBUTION HOSE

Antistatic and antibacterial DN 63/52
DN 75/63

COLLAR RINGS

For MULTI air distributors DN 125, 2 pce
DN 160, 2 pce

MULTI AIR DISTRIBUTORS

Metal, for supply air and extract air, incl. silencer
Sound attenuating material, closed cell to DIN 1946-6
Length 482 mm

DN 125: 2x10 connectors each DN 75 or DN 63/52, each with 5 pipe caps
Available for CWL-F-150 Excellent

MULTI AIR DISTRIBUTORS

Metal, for supply air and extract air,
Sound attenuating material, closed cell to DIN 1946-6

DN 160: 2x9 connectors each DN 75/63 or 63/52, each with 5 pipe caps
Available for CWL-F-300 Excellent

CONNECTOR FOR VALVE DN 125, ONE PIPE CAP AND TWO PIPE CONNECTORS

Incl. cover connector for vent DN 125,
antistatic and antibacterial DN 63/52, L = 325 mm
DN 75/63, L = 325 mm

Note: Click and seal ring required!

CONNECTOR FOR VALVE DN 125, ONE PIPE CAP AND TWO PIPE CONNECTORS

Incl. cover connector for vent DN 125,
antistatic and antibacterial DN 75, L = 325 mm

Note: Click and seal ring required!

FLOOR GRILLE CONNECTOR

One pipe cap and two pipe connectors
antistatic and antibacterial DN 75/63, L = 300 mm

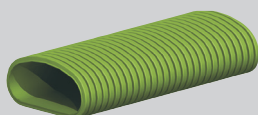
Note: Click and seal ring required. Use DN 63 for DN 63 adaptor!

CLICK RING

Antistatic and antibacterial DN 63/52, bag of 10
DN 75/63, bag of 10

SEAL RING

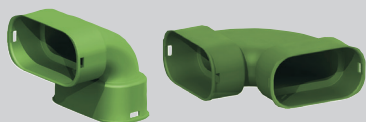
DN 63/52, bag of 10
DN 75/63, bag of 10



FLAT DUCT

With smooth internal surface,
antistatic and antibacterial

50x100, 50 m roll
50x140, 20 m roll

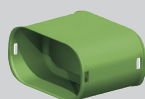


CWL 90° BEND FOR FLAT DUCT

Antistatic and antibacterial

50x100, vertical
50x100, horizontal
50x140, vertical
50x140, horizontal

Note: Seal ring required!



CLICK CONNECTOR FOR FLAT DUCT

Antistatic and antibacterial

50x100
50x140

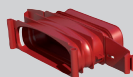
Note: Seal ring required!



SEAL RING FOR FLAT DUCT

Antistatic and antibacterial

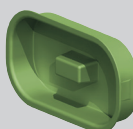
50x100, bag of 10



SEAL RING FOR FLAT DUCT

Antistatic and antibacterial

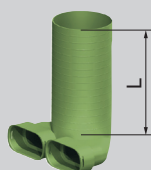
50x140, bag of 10



PIPE CAP FOR PROFILE

Antistatic and antibacterial

50x100, bag of 10
50x140, bag of 10



CONNECTOR FOR VALVE DN 125

One or two duct connectors and one pipe cap,
antistatic and antibacterial, incl. cover connector for valve DN 125

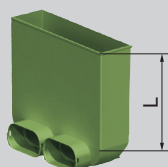
Length L = 240 mm

50x100 - 90°

Length L = 330 mm

50x140 - 90°

Note: Seal ring 50x100 or 50x140 required!



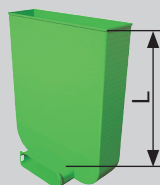
FLOOR GRILLE CONNECTOR

One or two duct connectors and one pipe cap,
antistatic and antibacterial, incl. cover

Length L = 220 mm

50x100 [two duct connectors]

Note: Seal ring 50x100 required!



FLOOR GRILLE CONNECTOR

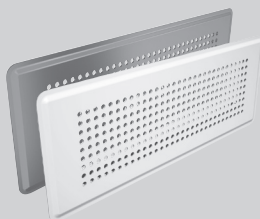
One duct connector and one pipe cap,
antistatic and antibacterial, incl. cover

Length L = 240 mm

50x140 [one duct connector]

Note: Seal ring 50x140 required!

MECHANICAL VENTILATION CWL EXCELLENT EXCELLENT FLAT DUCT SYSTEM



FLOOR GRILLE, METAL

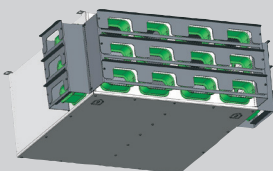
White or stainless steel



AIR DISTRIBUTOR

Metal, for supply and extract air
incl. silencer for direct installation on the CWL-F-150 Excellent.
Sound attenuating material, closed cell to DIN 1946-6

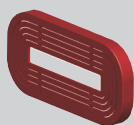
DN125: 2x6 connectors each, 50x100 with 3 pipe caps



AIR DISTRIBUTOR

Metal, for supply air and extract air
incl. silencer for direct installation onto the CWL-F-300-Excellent.
Sound attenuating material, closed cell to DIN 1946-6

DN160: 2x9 connectors each, 50x100 with 5 pipe caps



RESTRICTOR FOR FLAT DUCT

Antistatic and antibacterial

50x100, bag of 10

Available for CWL-F-150 Excellent

FLEXIBLE ROUND HOSE SYSTEM AND FLAT DUCT



90° ADAPTOR FROM DN 75 ROUND TO FLAT DUCT 50X100

Antistatic and antibacterial

Note: Click and seal ring required.



ANGLE ADAPTOR 2X ROUND DN 75 TO 1X FLAT DUCT 50X140

Antistatic and antibacterial

Note: Click and seal ring required.



UNIVERSAL CLIP FOR FLAT DUCT 50X100, 50X140 AND ROUND TUBE Ø 63 MM AND Ø 75 MM

10 pce



UNIAIR 125R

Round design valve for supply and extract air



UNIAIR 125Q

Design valve cross for supply and extract air

FILTER BAG

5 pce

Available for CWL extract air vents



KITCHEN EXTRACT AIR VENT WITH FILTER ISO COARSE 45% (G3)

NOTES



Dealer address

WOLF GMBH/POSTFACH 1380/D-84048 MAINBURG/TEL. +49.0.875174-0/FAX +49.0.875174-1600/WWW.WOLF.EU

